

$$\frac{0.7}{1} \textcircled{a}$$

$$y = |x-2| + 3|x|$$

$$y = -x + 2 - 3x \quad x \leq 0$$

$$y = -4x + 2$$

$$(0, 2) \text{ points } \uparrow$$

$$(-1, 6)$$

$$0 \leq x \leq 2$$

$$y = -x + 2 + 3x$$

$$y = 2x + 2$$

$$\text{points } \uparrow$$

$$(0, 2) \quad (2, 6)$$

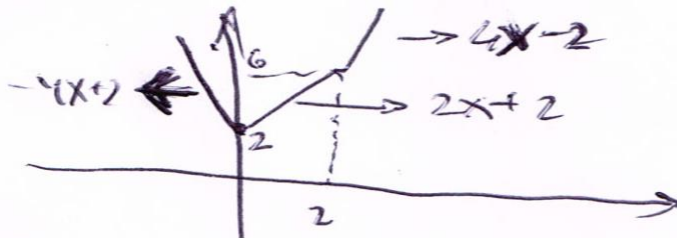
$$x \geq 2$$

$$y = x - 2 + 3x$$

$$y = 4x - 2$$

$$\text{points } \uparrow$$

$$(2, 6) \quad (3, 10)$$



①

$$4 < |x-2| + 3|x| \leq 7$$

נרצ' לנסות את המרחק 0

$$4 < -4x + 2 \leq 7 \quad x \leq 0$$

$$\boxed{-\frac{5}{4} \leq x < -\frac{1}{2}}$$

$$4 < 2x + 2 \leq 7 \quad 0 \leq x \leq 2$$

$$1 < x \leq \frac{5}{2}$$

$$\boxed{1 < x < 2} \quad \text{כל המרחק ~~אלה~~ ^{אלה}}$$

$$4 < 4x - 2 \leq 7 \quad x \geq 2$$

$$1\frac{1}{2} < x \leq 2\frac{1}{4}$$

$$\boxed{2 \leq x < 2\frac{1}{4}}$$