

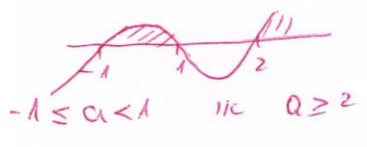
0.13
71

$$0 \leq \sqrt{x} \leq 2 \leftarrow x \leq 4$$

$$0 \leq \frac{a^2 - a - 2}{a - 1} \leq 2 \quad \text{p.1}$$

$$0 \leq \frac{(a-2)(a+1)}{a-1} \leq 2$$

$$0 \leq \frac{(a-2)(a+1)}{a-1}$$



$$\frac{a^2 - a - 2}{a - 1} - 2 \leq 0$$

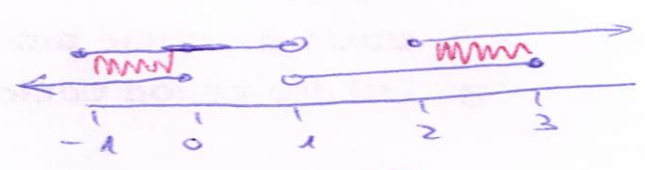
$$\frac{a^2 - a - 2 - 2a + 2}{a - 1} \leq 0$$

$$\frac{a^2 - 3a}{a - 1} \leq 0$$



$a \leq 0$ or $1 < a \leq 3$

Interval of a



$-1 \leq a \leq 0$ or
 $2 \leq a \leq 3$