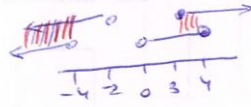
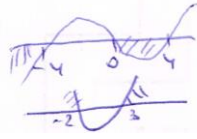


1.9  
2

$$\begin{cases} x^3 - 16x < 0 \\ x^2 - x - 6 \geq 0 \end{cases} \rightarrow \begin{cases} x(x^2 - 16) < 0 \\ (x-3)(x+2) \geq 0 \end{cases} \rightarrow \begin{cases} x(x-4)(x+4) < 0 \\ (x-3)(x+2) \geq 0 \end{cases}$$



$$\begin{cases} x < -4 \\ 3 \leq x < 4 \end{cases}$$