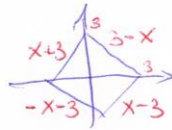


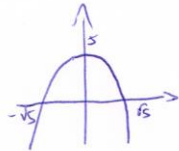
0.16
2

$$\begin{cases} x^2 + |y| = 5 \\ |x| + |y| = 3 \end{cases}$$

2



הישרים האלו הם

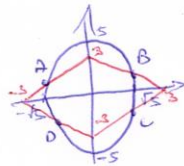


$$y = 5 - x^2$$

אלו הן

$$|y| = 5 - x^2$$

אלו הן



הנקודות הללו הן נקודות המפגש

המשוואות הללו הן

- A: $x+3 = 5-x^2 \rightarrow x^2+x-2=0 \rightarrow x = \boxed{-2}, 1$ A(-2, 1)
- B: $3-x = 5-x^2 \rightarrow x^2-x-2=0 \rightarrow x = \boxed{2}, -1$ B(2, 1)
- C: $x-3 = -(5-x^2) \rightarrow x^2-x-2=0 \rightarrow x = \boxed{2}, -1$ C(2, -1)
- D: $-x-3 = -(5-x^2) \rightarrow x^2+x-2=0 \rightarrow x = \boxed{-2}, 1$ D(-2, -1)