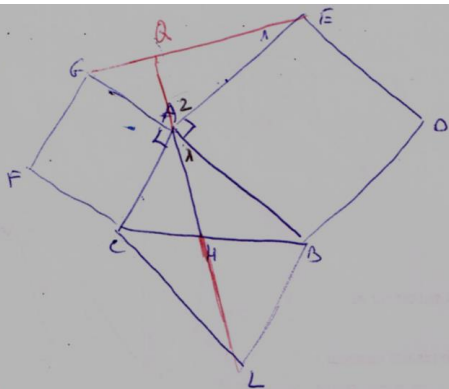


0.9
S



(3.5.3) $\triangle ACH \cong \triangle LHB \Rightarrow AH = HL$
 $CH = HB$.1c

∴ $\angle ABL = \angle CAH$

$\angle CAB = \alpha$ (10)

$\Rightarrow \angle ABL = 180 - \alpha$

$\angle GAE = 360 - 90 - 90 - \alpha = 180 - \alpha$

$AB = AE$

$BL = AC = GA$

$\Rightarrow \triangle GAE \cong \triangle LBA$

∴

$AL = GE \Rightarrow \boxed{GE = 2AH}$

$\angle QAH = 180^\circ$

$\angle A_2 = 90 - \beta \leftarrow \angle A_1 = \beta$ (10)

(10) $\angle E_1 = \angle A_1 = \beta$

$\triangle QAE$: $\angle EQA = 180 - \angle E_1 - \angle A_2$
 $= 180 - \beta - (90 - \beta) = \underline{90}$

.2