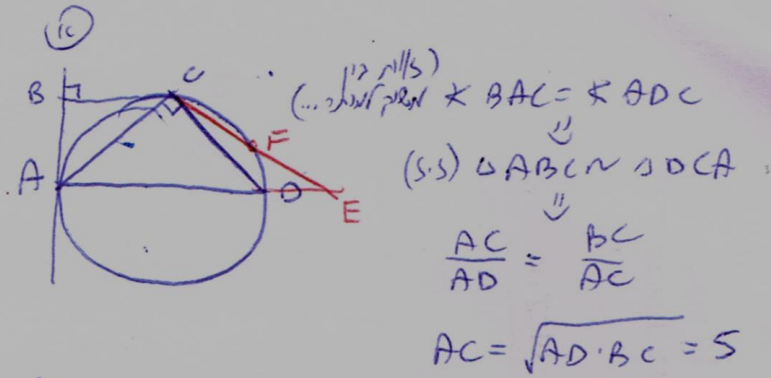


1.62
5



(2)

$$\begin{aligned}\angle E &= \angle ADC - \angle CFE \\ \angle ADC &= \angle BAC = 90 - 51 = 39^\circ \\ \angle CAD &= 90 - 39 = 51 \\ \widehat{CD} &= 2 \cdot 51 = 102^\circ \\ \widehat{CF} &= \frac{1}{3} \widehat{CD} = 34^\circ \rightarrow \angle DCF = 17^\circ \\ \angle E &= 39 - 17 = 22^\circ\end{aligned}$$