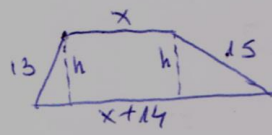


$$\frac{1.74}{5}$$



$$2x+14=28$$

$$x=7$$

5070
! poin

$$\sqrt{13^2-h^2} + \sqrt{15^2-h^2} = 14$$

$$169-h^2+225-h^2+2\sqrt{13^2-h^2}\sqrt{15^2-h^2}=196$$

$$(169-h^2)(225-h^2) = (h^2-99)^2$$
$$169 \cdot 225 - 4h^2 = 196h^2 \rightarrow h = \frac{168}{14}$$

$$S = \frac{(7+21) \cdot 168}{2 \cdot 14} = 168$$