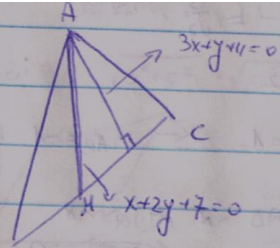


3.1  
6



B(-2, -7)

BC:  $m = \frac{1}{3}$ ,  $y + 7 = \frac{1}{3}(x - 2)$   
 $y = \frac{1}{3}x - \frac{2}{3}$

$$\left. \begin{aligned} 5 &= \frac{2+x_c}{2} \rightarrow x_c = 8 \\ -6 &= \frac{-7+y_c}{2} \rightarrow y_c = 5 \end{aligned} \right\} C(8, 5)$$

AC:  $y + 2 = \frac{-2+5}{-3+8}(x+3) \rightarrow y = -\frac{3}{4}x - 2\frac{9}{4}$

201-1000/c

: المثلث المثلثي A في

$$\begin{aligned} -3x - 11 &= \frac{-x - 7}{2} \\ -6x - 22 &= -x - 7 \\ 5x &= -15 \end{aligned}$$

$A(-3, -2)$

AB:  $y + 7 = \frac{-2+7}{-3-2}(x-2) \rightarrow y = -x - 5$

BC of the triangle is parallel to the

$$-\frac{x-2}{2} = \frac{1}{3}x - \frac{2}{3}$$

$|x=5| \rightarrow K(5, -6)$

B-1 A of calculation