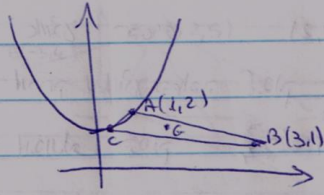


3.33
6



$C(x, 1+x^2)$ שיפוט נק' μ (1)

G - נק' אמצע

$$G\left(\frac{1+3+x}{3}, \frac{1+x^2+2+1}{3}\right) = \left(\frac{4+x}{3}, \frac{4+x^2}{3}\right)$$

G נק' על y-n / x-n ישרים μ (2)

$$x^2 = \frac{16+8x+x^2}{3} \rightarrow 3x^2 = \frac{16+8x+x^2}{3} \quad 8x = \frac{3x^2-16}{3}$$

$$3x^2 - 8x = \frac{x^2-16}{3} \rightarrow 3x^2 - 8x + \frac{20}{3} = \frac{x^2-16}{3}$$

$$y = 3x^2 - 8x + \frac{20}{3} \quad \mu$$