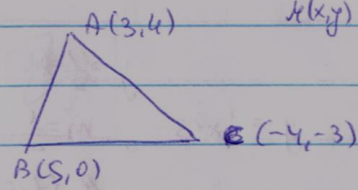


3.16  
5



$M(x,y)$ ? פולנה למרחק שווה אל  $(0,0)$

$$\begin{cases} MA = MB \\ MA = MC \end{cases}$$

$$\begin{cases} (x-3)^2 + (y-4)^2 = (x+4)^2 + (y+3)^2 \\ (x-3)^2 + (y-4)^2 = (x-5)^2 + y^2 \end{cases} \rightarrow \begin{cases} 14x + 14y = 0 \\ 4x + 8y = 0 \end{cases} \rightarrow x = y = 0$$

$$R^2 = (0-3)^2 + (0-4)^2 = 25$$

$$x^2 + y^2 = 25 \text{ פולנה למרחק}$$