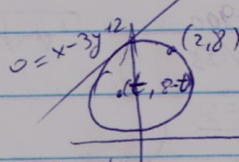
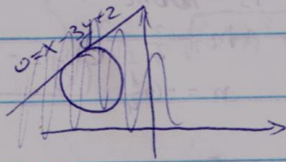


4.8



$m = -\frac{1}{3}$

(1) $x(2) < 0$ | 1/1

1/10 $x(2) < 0$ | 1/10

(2) $x(2) < 0$ | 1/10

$$\sqrt{(t-2)^2 + (8-t-8)^2} = \frac{|t-3(8-t)+2|}{\sqrt{10}}$$

$$10(2t^2 - 4t + 4) = 16t^2 - 176t + 484$$

$$4t^2 - 136t - 444 = 0 \rightarrow t^2 + 34t - 111 = 0 \rightarrow t = 3$$

$$\rightarrow t = -37$$

(-37, 45)