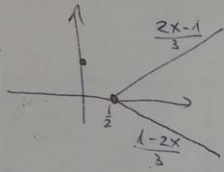


$$2x - 3|y| = 1$$

$$3|y| = 2x - 1$$



$$x = \frac{1}{2} \leftarrow y = 0 \text{ } \rightarrow \text{ok}$$

$$3y = 2x - 1 \quad \text{for } y > 0 \quad \rightarrow \text{ok}$$

$$3y = 1 - 2x \quad \text{for } y < 0 \quad \rightarrow \text{ok}$$

2.95
p 3

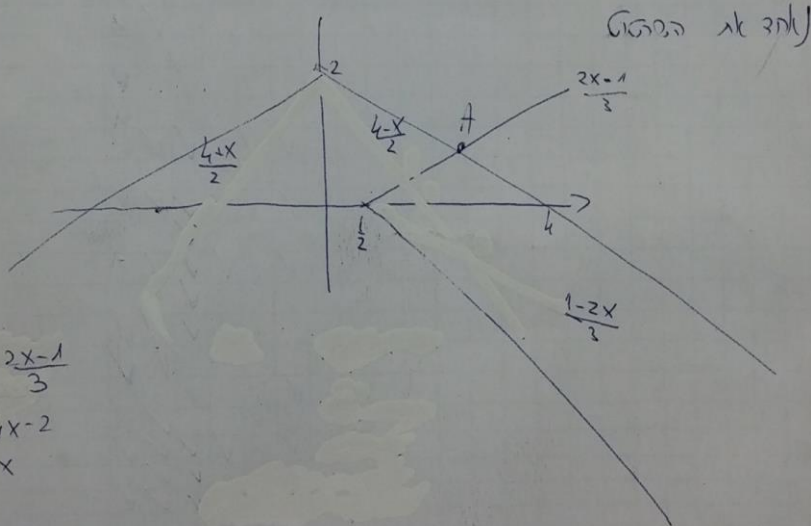
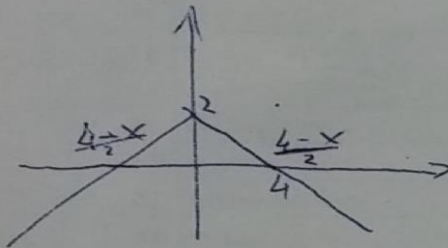
$$|x| + 2y = 4$$

$$2y = 4 - |x|$$

$$y = 0 \leftarrow x = 4 \text{ } \rightarrow \text{ok}$$

$$2y = 4 - x \quad x > 0 \text{ } \rightarrow \text{ok}$$

$$2y = 4 + x \quad x < 0$$



A:

$$\frac{4-x}{2} = \frac{2x-1}{3}$$

$$12 - 3x = 4x - 2$$

$$14 = 7x$$

$$x = 2$$

$$A(2, 1)$$