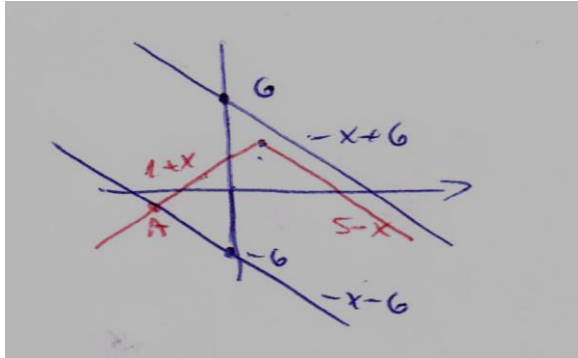
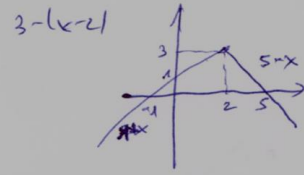
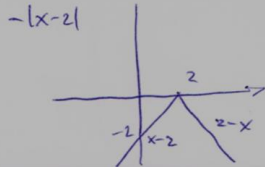
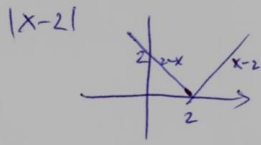
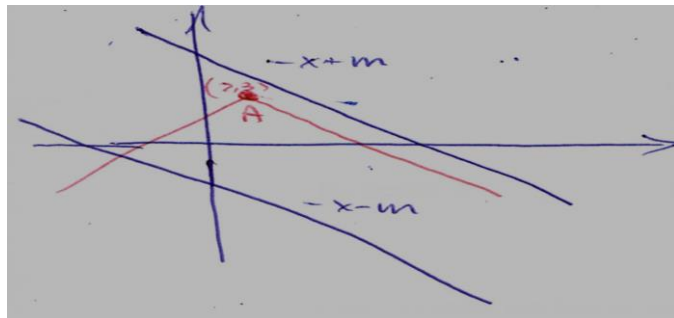


4.23  
1

$$\begin{cases} y = 3 - |x-2| \\ |x+y| = 6 \end{cases}$$



A:  $1+x = -x-6 \rightarrow x = -3\frac{1}{2}$   $A(-3\frac{1}{2}, -2\frac{1}{2})$



א. עבור מותן זקן  $y = -x + m$   $\text{CS}$   
 $-2 + m \geq 3$   
 $\boxed{m \geq 5}$

$\Rightarrow$   $x = -y$   $|x+y| = 0$   $\text{CS}$   
 $\boxed{m \leq 0}$

ב. עבור מותן זקן  $y = -x - m$   $\text{CS}$   
 $-2 - m \geq 3$   
 $-2 + m = 3 \rightarrow m = 5$   
 $-2 - m = 3 \rightarrow m = -5$

ג. עבור מותן זקן  $y = -x - m$   $\text{CS}$   
 $-2 - m < 3$   
 $\boxed{0 < m < 5}$

המותן הזקן