

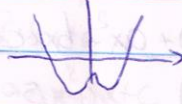
4.25  
72

$$b=0 \begin{cases} p(1)=0 = a+b+c+b+a \rightarrow c = -2a-2b \\ p(-1)=0 = a-b+c-b+a \rightarrow c = -2a \end{cases}$$

$$p'(x) = 4ax^3 + 3bx^2 + 2cx + b$$

$$p'(x)=0 = 2x(2ax^2+c)$$

$$p(0) = 2 = a \\ c = -4$$



1/3