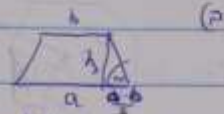


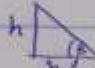
3.63
5

misalkan sisi panjangnya a dan b dan tinggi h

• Jarak sisi = $\frac{a+b}{2}$



$$S_{\text{selim}} = \frac{(a+b)h}{2} = \frac{(a+b) \cdot \frac{a-b}{2}}{2} = \frac{(a^2-b^2)}{4}$$

$h = h_{\text{tabung}} = \frac{a-b}{2}$  misalkan sisi panjang

$$V = h \cdot S_{\text{selim}} = \frac{a-b}{2} \cdot \frac{(a^2-b^2)}{4} = \frac{(a^2-b^2)(a-b)}{8}$$