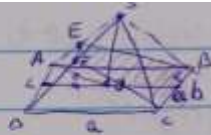


3.74  
S



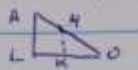
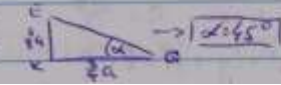
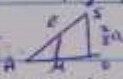
(p.18)  $AD \parallel BC$ ,  $EF \parallel AD \iff \triangle SAO \cong \triangle PEF$  (1)

$EF \parallel BC \iff$

$EB \parallel FC \iff EF = \frac{1}{2} BC$ ,  $FC = EB \iff (3, 2, 3) \triangle AEB \cong \triangle DFC$

$0.10 \approx \sqrt{5} - 1$   $E-N$  p.18 p.19 (2)

$EN = \frac{2}{3} a \iff$



$$\frac{LK}{LO} = \frac{AH}{AO} = \frac{1}{2} \rightarrow LK = \frac{1}{2} a$$

$\rightarrow \boxed{20.65^\circ}$