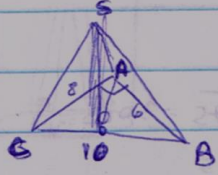
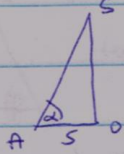


4.12  
6



הקו SO הוא הגובה של המשולש ABC  
הוא ניצב ל-AB ולכן  $\angle SOA = 90^\circ$

$$AO = \frac{1}{2} AB = 5$$



$$SO = \frac{SO}{\sin \alpha}$$

$$V = \frac{1}{3} S_{ABC} \cdot SO = \frac{1}{3} \cdot \frac{8 \cdot 6}{2} \cdot 5 = 40 \text{ cm}^3$$