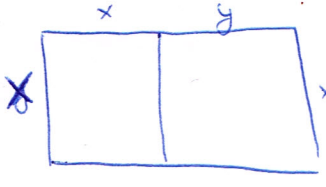


-1
(5/6)

(c)



$$\begin{cases} 48 = x(x+y) \\ 40 = 4x + 2x + 2y \rightarrow y = 20 - 3x \\ 48 = x^2 + xy = x^2 + x(20 - 3x) \end{cases}$$

$$48 = x^2 + 20x - 3x^2$$

$$2x^2 - 20x + 48 = 0$$

$$x^2 - 10x + 24 = 0$$

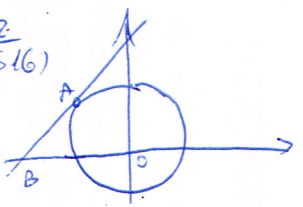
$$x = 6 \rightarrow y = 8$$

$$x = 4 \rightarrow y = 8$$

6, 8 : 1/3, 1/3, 1/3
4, 12 : 1, 1, 1

(7) $\frac{\text{שטח המלבן הפנימי}}{\text{שטח המלבן החיצוני}} = \frac{2(6+2)}{40} = \frac{16}{40} = 40\%$
 והשאר $\rightarrow \frac{2(4+12)}{40} \cdot 100 = 60\%$

-2
(5/6)



AO מלבן אל (3,1) -10
 $m_{AO} = -\frac{3}{4}$ $O(0,0)$
 $y - 0 = -\frac{3}{4}(x - 0) \rightarrow y = -\frac{3}{4}x$
 :A נ"ח מלבן אל (3,1) מלבן אל (3,1) ו-3

$$100 = x^2 + \left(-\frac{3}{4}x\right)^2 = x^2 + \frac{9}{16}x^2 = \frac{25x^2}{16} \rightarrow x = \pm 8$$

A (-8, 6) $\leftarrow x = -8$ מלבן יד

$$y - 6 = \frac{4}{3}(x + 8)$$

$$y = \frac{4}{3}x + 16\frac{2}{3}$$

$$0 = \frac{4}{3}x + 16\frac{2}{3}$$

$$x = -12\frac{1}{2} \rightarrow B(-12\frac{1}{2}, 0)$$

(y=0) B נ"ח 10

$BO = 12\frac{1}{2}$
 $AO = R = 10$

$$AB = \sqrt{(-8 + 12\frac{1}{2})^2 + (6 - 0)^2} = 7.5$$

שטח הטרפז = $AB + AO + BO = 30$